



BHS Women's Imaging

3D BREAST TOMOSYNTHESIS

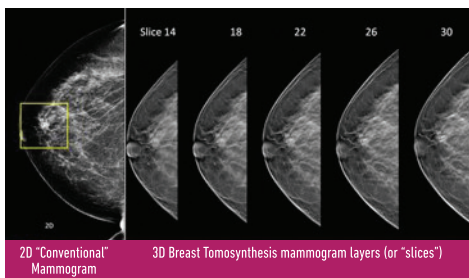
AN EXCITING NEW TECHNOLOGY IN THE FIGHT AGAINST BREAST CANCER.

In clinical studies, 3D Breast Tomosynthesis has been shown to be superior to digital mammography because it allows doctors to examine breast tissue one layer at a time. As part of your annual screening, 3D Breast Tomosynthesis may be used in conjunction with traditional digital mammography in order to capture more breast images.

This technology is helping physicians find very small cancers and reduce the number of women called back for diagnostic mammograms each year. Recent studies have shown about a 30% increase in cancer detection and a 15% decrease in women recalled for additional imaging.

WHAT IS 3D BREAST TOMOSYNTHESIS?

RADIOLOGISTS CAN SEE BREAST TISSUE DETAIL IN A WAY NEVER BEFORE POSSIBLE.



3D Breast Tomosynthesis converts digital breast images into a number of very thin layers (or "slices") and builds them into what is essentially a 3-dimensional mammogram, as shown in the above image.

During the tomosynthesis portion of your exam, an x-ray arm will sweep in a slight arc over your breast. In just a few seconds, multiple breast images will be taken, resulting in a 3D image of your breast tissue in very thin, one millimeter layers.

Since the breast is composed of pockets of dense tissue surrounded by fat, a conventional 2D mammogram creates an image that appears similar to a smoky haze. Using 3D Breast Tomosynthesis, your doctor is able to view and examine fine details of your breast tissue a millimeter at a time, enabling them to see tiny "spots" called microcalcifications and other subtle signs of cancer.

BHS WOMEN'S IMAGING CENTER

Butler Health System Crossroads Campus
129 Oneida Valley Road, Suite 210, Butler, PA 16001

To schedule an appointment, call **877-247-2717**